

CONTROL HUB

**VISIBILITY & ANALYSIS
FOR AN EMPOWERED FLEET**

Powerful real-time distribution control tower





CONTROL HUB

Sunstone Logistic Systems has developed a powerful realtime distribution control tower and KPI dashboard - providing ultimate visibility by merging planned routes with live tracking data, delivering meaningful measurements & actionable distribution intelligence.

In today's dynamic and complex logistics space we want to execute our optimized route as close to the optimized plan as possible. Sunstone has developed **Operational Analysis Dashboards** to make this a reality.

Status Board



“Know instantly if your driver is making unscheduled stops”

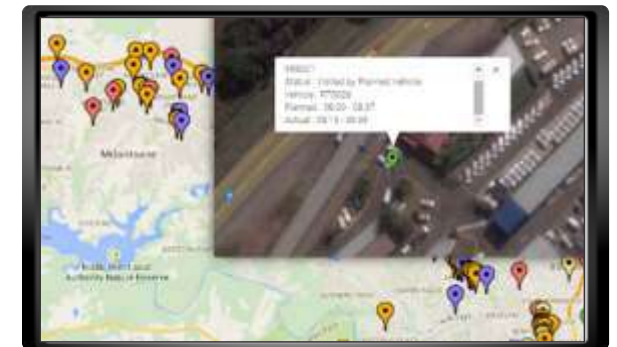
- live vehicle activity
- stop status
- depot departure times
- customer arrival times
- route progress
- total customer hit rate
- volume of product delivered
- scheduled / unscheduled vehicles



Drive into street view mode with powerful Google Maps integration.

VISIBILITY / MEASUREMENTS / INTELLIGENCE
= CONTROL OF:
FLEET / DRIVERS / PROFITS

Live Route Completion



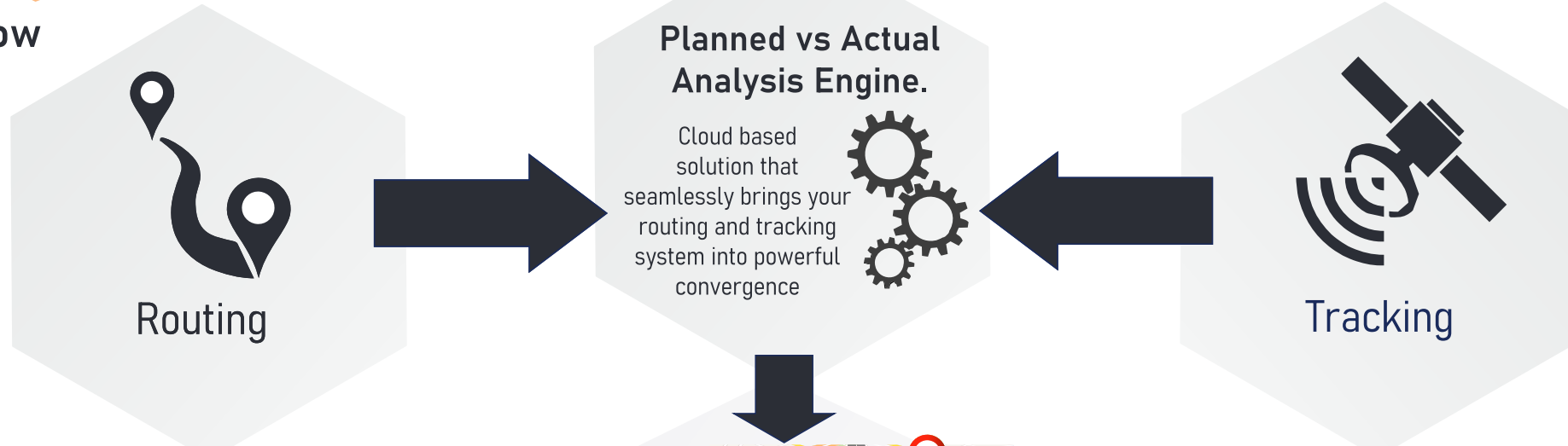
- Planned and actual stops with classification indicators and informative statistics.
- Know instantly if your driver is stopped at a planned / unplanned customer or known / unknown location.
- Track delivery progress in real time.
- Drag and drop pins to easily update customer locations / co-ordinates.

Reduce transport distribution costs by up to **22%** when combined with



ROUTE BUILDER

Data Flow



Business Intelligence Modules

- Planned Vs Actual Km's
- Route Adherence
- Customer Hit Rate
- Late Depot Departure
- Customer Service Score
- Depot Return Times
- Time Utilisation
- Vehicle Space Utilisation
- Cost/trip/Km/Truck day

Automated Reports

- Driver Debrief
- Safety Scorecards
- Customer Scores
- Route Adherence
- Planned Vs Actual kms
- Cost of Trip



This section displays two screenshots of reports. The top one is a 'Summary Report' showing a table of data with columns for various metrics. The bottom one is a 'Tripsheet Report' with a table and a line graph below it. The Sunstone Logistics Systems logo is visible in the bottom right corner of the Tripsheet Report.

Driver Safety & Behavior

The data analysed in ControlHub can report on driver behaviour related to: over-speeding, harsh acceleration, harsh braking and turning, as well as accident analysis

ACTIONABLE VISIBILITY = COST SAVING OPPORTUNITIES

Controlhub is offered as a software service subscription, with no fixed term contracts, giving your ultimate flexibility. The system seamlessly integrates into Sunstone's or 3rd party tracking systems, ideal for fleets of 10 up to 1000+ vehicles.

Sunstone Logistic Systems offers outstanding after sale-service and support with a 24 hour bureau. Going beyond to build relationships with our customers.

No infrastructure / set-up fees

NO CAPEX



CONTROL HUB Integrates seamlessly with **BLUE TRACK**

BLUE TRACK

Indoor Positioning & Mapping System

Benefits

- Reduce loading times
- Identify and eliminate process bottlenecks

Reports

- Gantry processing time report (by vehicle / per trip)
- Loading process time report (by vehicle by day / week / month)
- Bay statistics report
- Internal turnaround time report

